



PART NUMBER  
**PFR5-305**

DESCRIPTION  
**REAR BEAM TO CHASSIS MOUNT BUSH**

### INSTALLATION GUIDE

#### Contents (parts per pack):

2 x Polyurethane A Bushes    1 x PTFE/Silicone Grease  
2 x Polyurethane B Bushes    2 x Stainless Steel Sleeves

*Please read the complete fitting instructions and check package components before fitment. These fitting instructions are to be used as a guide and in conjunction with workshop manual.*

*It is recommended that:*

- all work to be carried out by a licensed technician;*
- all safety precautions adhered to;*
- wheel alignment to be checked and adjusted as required after any suspension work.*
- All fasteners must be tensioned to manufacturer's torque settings.*

#### Fitting Instructions:

1. Remove the original rubber rear beam to chassis mount bushes, and retain the original washers from the beam.
2. Clean any dirt or corrosion from the beam, and file off any sharp edges.
3. Push the larger polyurethane part marked 5-305A into the beam from below.
4. From the top of the beam, place the smaller polyurethane part B, labelled 5-305B, onto the end of polyurethane part A.
5. Apply some of the supplied grease to the bore of the polyurethane parts and push the stainless steel sleeve into the bore of the bushes so it sits flush inside them. Ensure that the polyurethane part B is straight on top of part A.
6. Reassemble the beam back to the car using the original nuts and bolts, including the original washer.
7. Tension all hardware to manufacturers recommended torque settings.

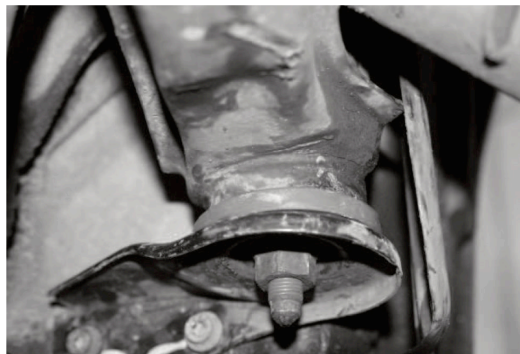


Figure 1 - The assembled rear beam to chassis mount