

POWERFLEX®

PART NUMBER
PFR3-716

DESCRIPTION
REAR TRACK CONTROL ARM BUSH

INSTALLATION GUIDE

Contents (parts per pack):

- 4 x Polyurethane Bushes
- 2 x Stainless Steel Sleeves
- 1 x PTFE/Silicone Grease

Please read the complete fitting instructions and check package components before fitment. These fitting instructions are to be used as a guide and in conjunction with workshop manual.

It is recommended that:

- all work to be carried out by a licensed technician;
- all safety precautions adhered to;
- wheel alignment to be checked and adjusted as required after any suspension work.
- All fasteners must be tensioned to manufacturer's torque settings.

Fitting Instructions:

1. Remove the original rubber bush from the rear track control arm.
2. Clean any dirt or corrosion from the bore of the arm.
3. Push the polyurethane part into the bore of the arm until the top hat section sits on the surface of the arm.
4. Push a second polyurethane part into the bore of the arm from the opposite side, as shown in figure 1.
5. Apply some of the supplied grease to the bore of the polyurethane parts and insert the stainless steel sleeve until it sits flush within the polyurethane parts.
6. Refit the arm and tension all hardware to manufacturers recommended torque settings.

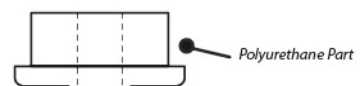
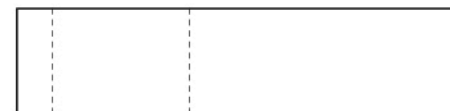
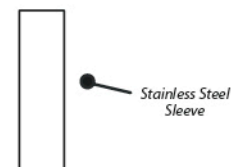


Figure 1