

POWERFLEX®

PART NUMBER	DESCRIPTION
PFF19-1802G	FRONT WISHBONE REAR BUSH ANTI-LIFT & CASTER OFFSET

INSTALLATION GUIDE

Contents (parts per pack):

- 2 x Aluminium Brackets fitted with Polyurethane Bushes
- 2 x Stainless Steel Washers 2 x Stainless Steel Sleeves
- 2 x PTFE Silicone Grease

Please read the complete fitting instructions and check package components before fitment. These fitting instructions are to be used as a guide and in conjunction with workshop manual.
 It is recommended that:
 -all work to be carried out by a licensed technician;
 -all safety precautions adhered to;
 -wheel alignment to be checked and adjusted as required after any suspension work.
 -All fasteners must be tensioned to manufacturer's torque settings.



Fitting Instructions:

1. Remove the wishbones from the car and remove the original rear bush mounting bracket and bush from the wishbone including the removal of the original sleeve of the bush from the wishbone.
2. Clean any dirt and corrosion from the end of the wishbone and fit the washer onto the arm followed by pressing the sleeve onto the arm with the largest diameter inner bore being positioned onto the arm first (Figure 1). Apply pressure until it locks the washer against the end of the arm, as shown in Figure 2.
3. Apply the PTFE/silicone grease to the bore of the bush and insert the wishbone with sleeve and washer fitted into the corresponding bush and bracket assembly with the sleeve fitting into the stepped section of the bush first, as shown in figure 3.

Note: the brackets and bushes are left and right handed and will only fit onto the car in the orientation shown in figure 4.

4. Re-fit the arm and wishbone bracket to the car and tension all hardware to manufacturers recommended torque settings.

Note: the anti-roll bar bush and bracket sit against the top face of the wishbone bracket and bush assembly.

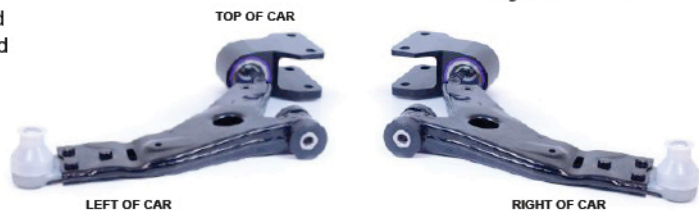
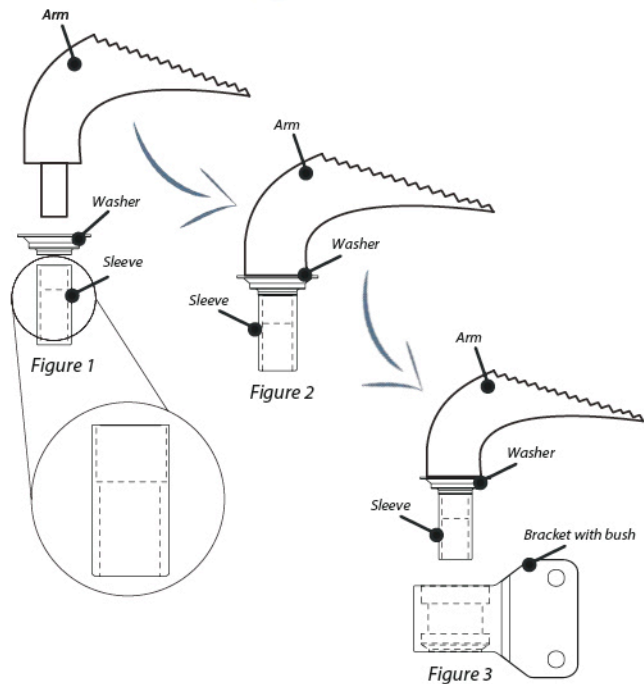


Figure 4 - Right-hand and left-hand bush and bracket assembly