

POWERFLEX®

PART NUMBER
PFR5-1104

DESCRIPTION
REAR TRAILING ARM FRONT BUSH

INSTALLATION GUIDE

Product description:

This polyurethane bush is designed to fit later gen 1 models with a trailing arm support bracket diameter of 60mm.

Contents (parts per pack):

- 2 x A part polyurethane bushes
- 2 x B part polyurethane bushes
- 2 x Aluminium outer shells
- 2 x Stainless steel sleeves
- 1 x Grease



Please read the complete fitting instructions and check package components before fitment. These fitting instructions are to be used as a guide and in conjunction with workshop manual.

It is recommended that:

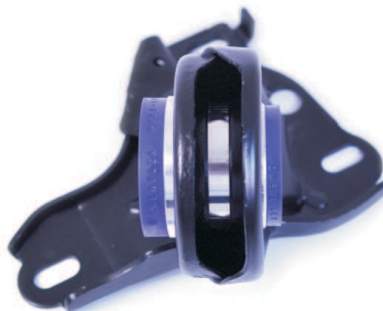
- all work to be carried out by a licensed technician;
- all safety precautions adhered to;
- wheel alignment to be checked and adjusted as required after any suspension work.

All fasteners must be tensioned to manufacturer's torque settings.

Fitting Instructions:

1. Remove the original rubber bush and outer shell from the front position of the rear trailing arm support bracket. Clean any dirt or corrosion from the bore in the bracket.
2. Press the outer shell into the bracket from the outside of the car until the larger diameter of the shell is against the bracket.
3. Check the stainless steel sleeve is not in the bush. Press the A part polyurethane bush into the outer shell from the inside of the car. Press the B part polyurethane bush into the shell from the outside of the car.
4. Apply some of the supplied grease to the bore and both ends of the bush and insert the sleeve into the bush. The original pressed steel washer fits against the B part of the bush from the outside of the car.

B Bush
Outside of car
- Fits against original domed washer



A Bush
Inside of car
- Fits against trailing arm spigot