

A1

INSTALLATION
DRAWING

IF THIS DOCUMENT IS PRINTED IN HARDCOPY,
IT IS FOR INFORMATION USE ONLY AND THEREFORE
IS NOT SUBJECT TO UPDATING CONTROLS. ALWAYS
REFER TO SOLIDWORKS VIEWER FOR LATEST ISSUE



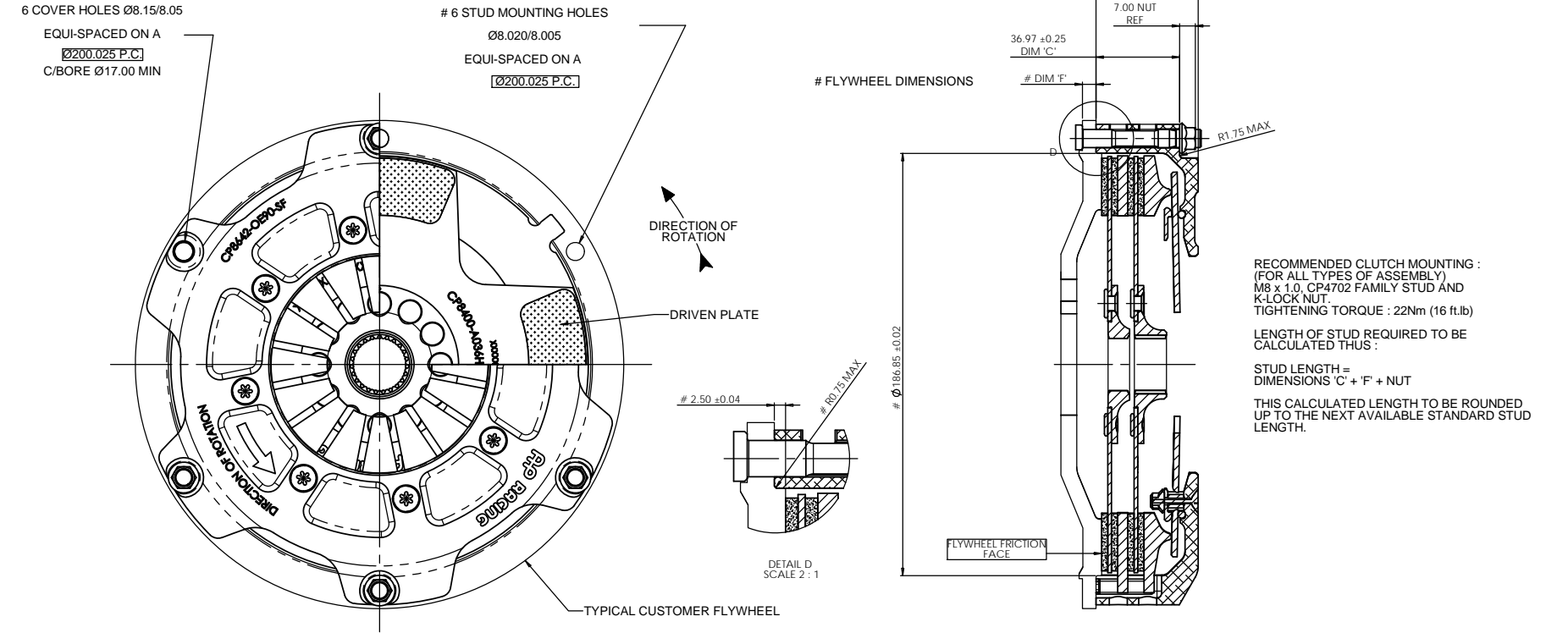
FIRST ANGLE
PROJECTION

THIS DRAWING IS CONFIDENTIAL AND IS SUPPLIED ON THE EXPRESS CONDITION THAT
IT SHALL NOT BE LOANED OR COPIED OR DISCLOSED TO ANY OTHER PERSON OR USED
FOR ANY OTHER PURPOSE WITHOUT THE WRITTEN CONSENT OF AP RACING LTD.

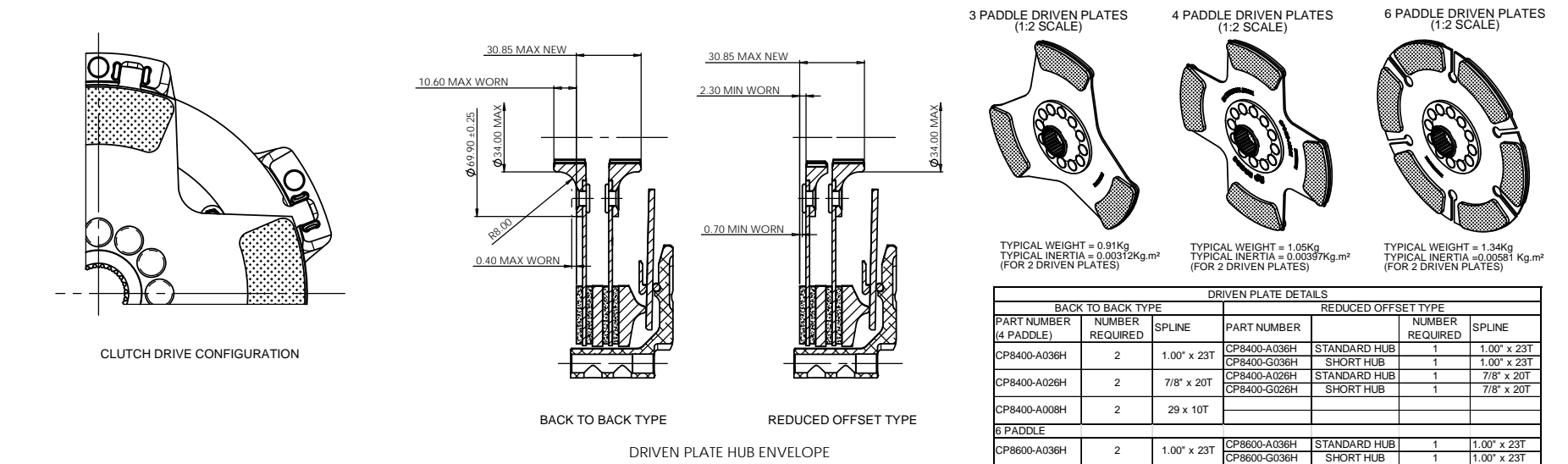


© AP Racing Ltd. 2005

AP Racing
Wheler Road
Coventry
CV3 4LB
Tel: +44 (0) 24 7663 9595
Fax: +44 (0) 24 7663 9559
e-mail: engineering@apracings.co.uk
Web site: <http://www.apracings.com>



DRIVEN PLATE DETAILS



Issue No.	Alterations		Zone	Initials
	Date & No.	Particulars		
1	03/07/13 C-4529	FIRST ISSUE	#	JG

SCALE 1:1

SHEET 2 OF 2

DRAWN
APPROVED
DERIVED FROM

Jeremy Govan

TITLE
Ø184mm (7.25") 2 PLATE
CLUTCH INSTALLATION

DRG NO.
CP8642CD