

X2 DRIVER ID

QUICK START GUIDE



IMPORTANT!

- ▶ The MYLAPS X2 Driver ID is only compatible with the following products:
 - ▶ MYLAPS Direct Power TR2 Car/Bike Transponder (with valid subscription, activated to your transponder)
 - ▶ MYLAPS Direct Power X2 Car/Bike Transponder (with valid subscription, activated to your transponder)
 - ▶ X2 Pro Transponder
 - ▶ X2 Pro Plus Transponder
- ▶ X2 Driver ID only works with the latest firmware on the X2 transponder (this can be checked in the MYLAPS Connect software)

WHAT'S IN THE BOX?

1. X2 Driver ID Unit



2. Y-Cable



3. 4x Mounting Screws



4. M8 to M8 cable



Extra accessories for X2 Driver ID PRO:

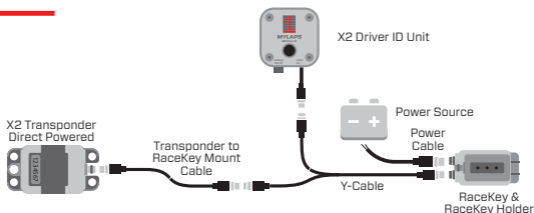
5. Deutsch Cable



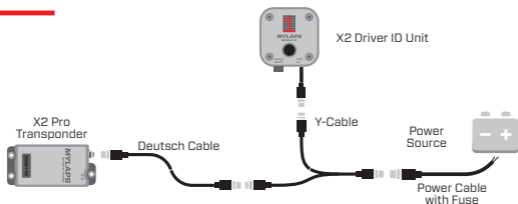
6. Power cable with fuse



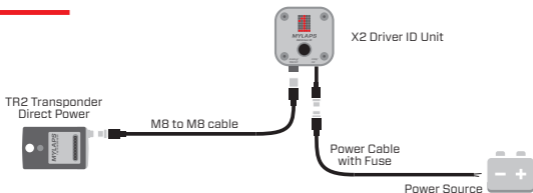
SETUP FOR X2 TRANSPONDER DIRECT POWER



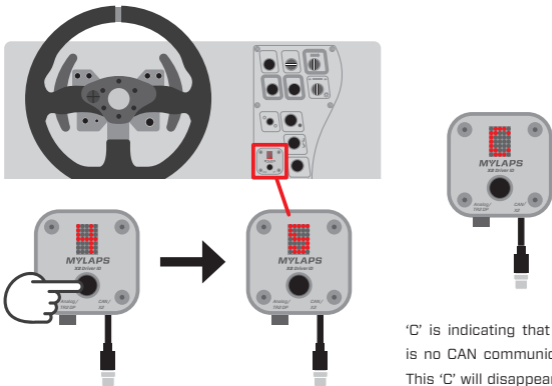
SETUP FOR X2 PRO TRANSPONDER



SETUP FOR TR2 TRANSPONDER DIRECT POWER



USING MYLAPS X2 DRIVER ID ON YOUR DASHBOARD



X2 Driver ID can be used by up to:

- ▶ 5 drivers (when using analog IDs)
- ▶ 9 drivers (when using digital IDs across CAN bus)

'C' is indicating that there is no CAN communication. This 'C' will disappear after 5 seconds and a blinking dot will appear in the right bottom corner as long as CAN is not connected.

ANALOG AND DIGITAL USE

- ▶ The X2 Driver ID supports both Analog and Digital Driver ID solutions simultaneously
- ▶ To support Analog ID's, driver ID 0 is added. Driver ID 0 means no Analog driver ID plug is connected to the driver ID switch
- ▶ When an Analog Driver ID plug or rotary switch is connected to the X2 Driver ID, the button on the X2 Driver ID unit is disabled
- ▶ When no Driver ID plug or rotary switch is connected, the button on the X2 Driver ID unit is enabled and can be used to select the correct driver

ADJUSTING THE BRIGHTNESS

1. Press and hold the button until 'B' appears on the LED panel
2. Click the button to scroll through the brightness options
3. Brightness will be set after releasing the button for 2 seconds



SETTING THE NUMBER OF DRIVERS AND OPERATING MODE

1. Press and hold down the button while powering up the X2 Driver ID.

The LED panel will briefly display 'D', after which you will see a number.

2. Press the button to scroll through 2 - 5 (the number of drivers).

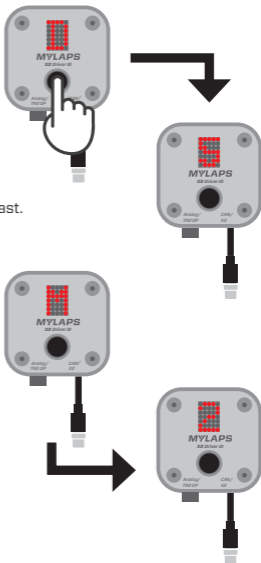
To set the number of drivers, press and hold the button until the LED panel blinks fast.

3. After setting the number of drivers, select the mode in which the X2 Driver ID needs to operate.

- ▶ Select 'M' when you want to use the analog input to connect a helmet plug or rotary switch.
- ▶ Select 'S' in case the analog input is not used, for example for an X2 (Pro) Direct Power Transponder or TR2 Direct Power Transponder.

To set the mode, press and hold the button until the LED panel blinks fast.

4. After this, the LED Panel will return to a number.



FOR MORE INFORMATION GO TO
ISA-RACING GmbH



SPECIFICATIONS

Dimensions Complete Driver Id module (without cable)	60x60x30 mm / 2,4x2,4x1,4 inch	Environmental protection	IP51
Dimensions PCB only	55x55x25 mm / 2,2x2,2x1 inch	Connection 1	4 pin M8 sensor cable male Pin 1 12V Brown Pin 2 CAN-L White Pin 3 GND Blue Pin 4 CAN-H Black
Weight Complete Driver ID module	87 gr / 0.191 lb	Connection 2	4 pin M8 chassis connector female Pin 1 12V Brown Pin 2 Driver ID resistance out White Pin 3 GND Blue Pin 4 Driver ID resistance in Black
Weight PCB only	30 gr / 0.066 lb	Max. number of drivers	Using the driver ID resistance in and out 5 Using the CAN bus 9
Power	12V / 0,3A	Analog out and input resistance per driver	ID 0 = no resistance ID 1 = 0 Ohm resistance ID 2 = 820 Ohm ID 3 = 2K2 Ohm ID 4 = 4K7 Ohm ID 5 = 12K Ohm
CAN Bus	CAN 2.0A compliant		
Baudrate	1 mbit/s		
CAN ID	0XA0		
Mounting bolt size	M3		
Environmental operating temperature	0 - 60°C / 32 - 140 °F		

IN CASE YOU ENCOUNTER ANY ISSUES, PLEASE CONTACT OUR SUPPORT TEAM

WWW.ISA-RACING.DE