

# A1 INSTALLATION DRAWING

IF THIS DOCUMENT IS PRINTED IN HARDCOPY, IT IS FOR INFORMATION USE ONLY AND THEREFORE IS NOT SUBJECT TO UPDATING CONTROLS. ALWAYS REFER TO SOLIDWORKS VIEWER FOR LATEST ISSUE



THIS DRAWING IS CONFIDENTIAL AND IS SUPPLIED ON THE EXPRESS CONDITION THAT IT SHALL NOT BE LOANED OR COPIED OR DISCLOSED TO ANY OTHER PERSON OR USED FOR ANY OTHER PURPOSE WITHOUT THE WRITTEN CONSENT OF AP RACING LTD.

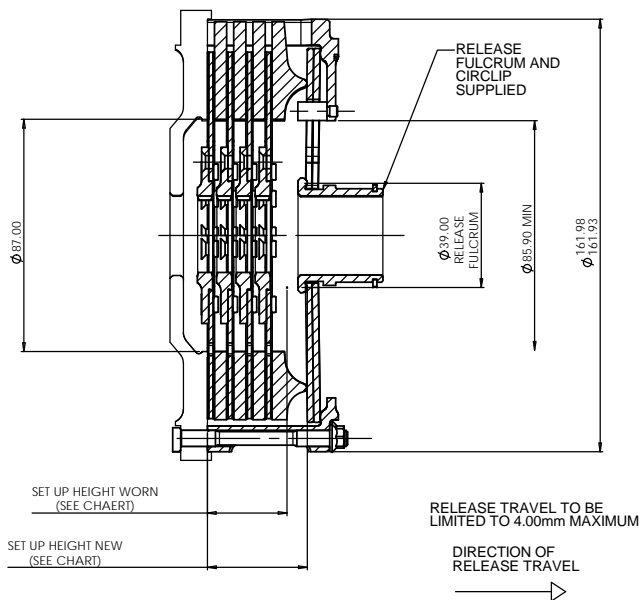
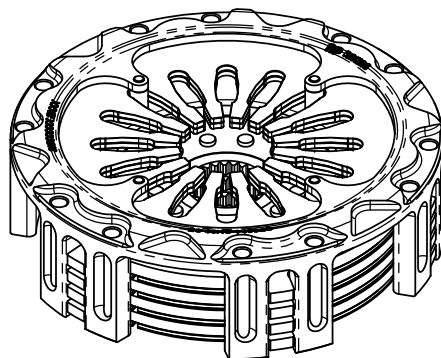


AP Racing  
Wheler Road  
Coventry  
CV3 4LB

Tel: +44 (0) 24 7663 9595  
Fax: +44 (0) 24 7663 9559  
e-mail: engineering@apracings.co.uk  
Web site: http://www.apracings.com

© AP Racing Ltd. 2013

## CP8804 Ø140mm (5.5") PULL TYPE SINTERED CLUTCH ASSEMBLY.



FOR OPTIONAL PULL TYPE SLAVE CYLINDER  
DETAIL SEE SHEET 3

### CP8804 CLUTCH FAMILY

MAXIMUM DYNAMIC TORQUE CAPACITY			
(Nm)	1410		
(ft.lb)	1039		
<b>RELEASE LOAD</b>			
Max. Peak Worn (N)	5700		
Max. Peak New (N)	4000		
<b>WEAR IN (See Note)</b>			
	1.50		
Set Up Height New	39.19		
Set Up Height Worn	35.95		
(Set Up Height is calculated from the flywheel friction face.)			
Release Ratio	4.41		
	Aluminium Cover	Steel Cover	Titanium Cover
Assembly Mass	n/a	4.00 kg	n/a
Assembly Inertia	n/a	0.013353 kg.m <sup>2</sup>	n/a
Estimated Driven Plate Inertia = 0.0024175 Kgm <sup>2</sup>			
<b>PERFORMANCE SUFFIX</b>	<b>OH</b>		
For Reference			
Diaphragm Spring Rate	ORA		
Clutch Ratio	HiR		

MATERIAL SUFFIX	COVER MATERIAL	DRIVEN PLATE MATERIAL	DRIVEN PLATE THICKNESS
<b>90</b>	STEEL	SINTERED	2.63mm

FLYWHEEL TYPE		
	SUFFIX	COMMENTS
STANDARD FLAT FLYWHEEL	<b>FF</b>	FOR INSTALLATION DATA SEE SHEET 2
STANDARD STEPPED FLYWHEEL	<b>SF</b>	n/a

Sample AP Racing Part No. **CP8804-OH90-FF**

**WEAR IN**  
THIS CLUTCH HAS BEEN DESIGNED FOR THE WEAR IN INDICATED ABOVE,

DRIVEN PLATE THICKNESS NEW:	2.63mm MIN		
	FOR 0.75 WEAR-IN	FOR 1.25 WEAR-IN	FOR 1.50 WEAR-IN
DRIVEN PLATE THICKNESS WORN:	n/a	n/a	2.26

DRIVEN PLATES AVAILABLE WITH THE FOLLOWING SPLINE SIZES

SPLINE	PART No.
1"X23T	
7/8" x 20T	
1 5/32" x 26T	CP3683-17FM3
29.0 x10T	
1 1/8" x10T	

Issue No.	Alterations			Zone	Initials
	Date & No.	Particulars	#		
1	30/07/13	FIRST ISSUE		#	JG
2	15/08/13	SUH CORRECTION NOW AS ISSUE 1		#	JG
3	15/04/14 C4698	SUH REVISED 39.19/35.95 WAS 37.56/36.44 29.33 WAS 29.82		J11	BJP
4	13/05/14	SHEET 3: REF TO CARBON STACK REPLACED BY "CLUTCH"		#	JG
5	01/09/15 C4954	SHEET 3, SLAVE CYLINDER. CP6245-7 WAS CP6245-44		#	JG
6	24/11/15	DIAPHRAGM SPRING COATING NOTE WAS BOTH FACES TOGETHER		#	JG
7	02/07/19 RAC23346	MAX. PEAK NEW WAS AT TRAVEL		K10	DSM

SCALE 1:1	SHEET 1 OF 3
DRAWN	Jeremy Govan
APPROVED	
DERIVED FROM	
TITLE	Ø140mm (5.50") QUAD PLATE I-DRIVE CLUTCH ASSEMBLY
DRG NO.	CP8804CD

# A1 INSTALLATION DRAWING

IF THIS DOCUMENT IS PRINTED IN HARDCOPY, IT IS FOR INFORMATION USE ONLY AND THEREFORE IS NOT SUBJECT TO UPDATING CONTROLS. ALWAYS REFER TO SOLIDWORKS VIEWER FOR LATEST ISSUE



THIS DRAWING IS CONFIDENTIAL AND IS SUPPLIED ON THE EXPRESS CONDITION THAT IT SHALL NOT BE LOANED OR COPIED OR DISCLOSED TO ANY OTHER PERSON OR USED FOR ANY OTHER PURPOSE WITHOUT THE WRITTEN CONSENT OF AP RACING LTD.



AP Racing  
Wheler Road  
Coventry  
CV3 4LB

Tel: +44 (0) 24 7663 9595  
Fax: +44 (0) 24 7663 9559  
e-mail: [engineering@apracings.co.uk](mailto:engineering@apracings.co.uk)  
Web site: <http://www.apracings.com>

© AP Racing Ltd. 2013

RECOMMENDED CLUTCH MOUNTING :  
(FOR ALL TYPES OF ASSEMBLY)  
M6 x 1.0 CP4703 FAMILY STUD AND K-LOCK NUT.

NUTS TO BE TIGHTENED IN A DIAMETRICALLY-OPPOSITE SEQUENCE, HALF A TURN AT A TIME  
TIGHTENING TORQUE : 10Nm (7.5 ft.lb)

LENGTH OF STUD REQUIRED TO BE CALCULATED THUS :

STUD LENGTH = DIMENSIONS 'C' + 'F' + ('R' OPTIONAL) + NUT

THIS CALCULATED LENGTH TO BE ROUNDED UP TO THE NEXT AVAILABLE STANDARD STUD LENGTH.

THIS ASSEMBLY IS SUPPLIED NEW WITH AN INSTALLATION PLATE AS SHOWN. THIS IS TO ALLOW THE ASSEMBLY TO BOLTED TO THE FLYWHEEL WITHOUT DAMAGING ANY OF THE CLUTCH COMPONENTS.

AFTER BOLTING THE CLUTCH TO THE FLYWHEEL REMOVE THE CIRCLIP AND INSTALLATION PLATE AND RETAIN FOR USE WHEN REMOVING THE ASSEMBLY FROM THE FLYWHEEL.

NOTE WHEN REMOVING A WORN CLUTCH ASSEMBLY THE INSTALLATION PLATE IS TO BE FITTED WITH THE 'WORN CONDITION -THIS SIDE UP' INSTRUCTION ON THE OUTSIDE.

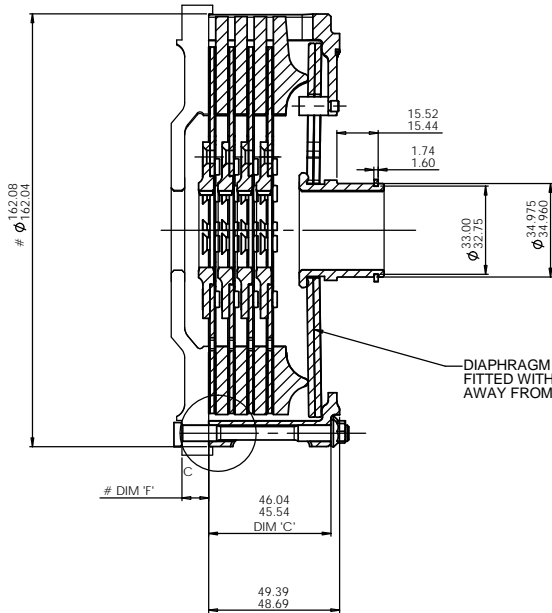
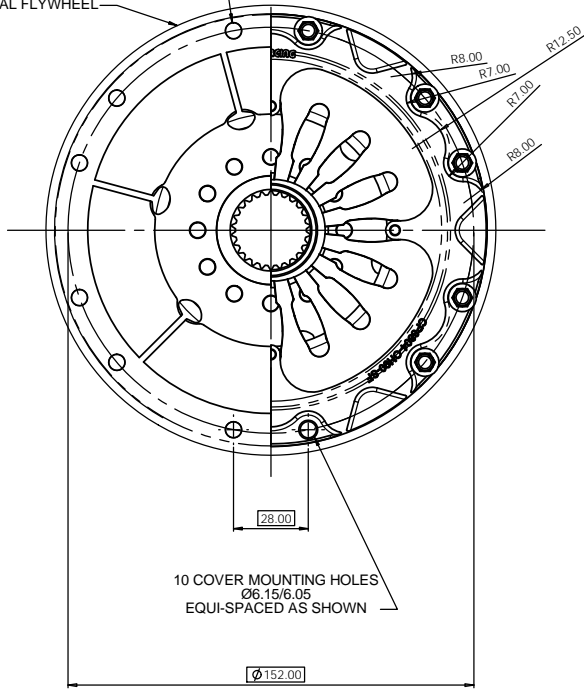
WHEN RETURNING THIS CLUTCH ASSEMBLY BACK TO AP RACING FOR RECONDITIONING PLEASE RETURN WITH THIS INSTALLATION PLATE FITTED.

(RECOMMENDED FOR CP4703 STUDS)

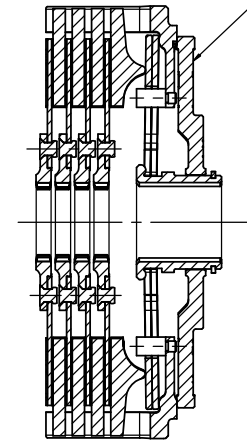
# 6 x 2 MOUNTING HOLES Ø6.012/6.000

EQUI-SPACED

TYPICAL FLYWHEEL



DIAPHRAGM SPRINGS TO BE FITTED WITH COATED FACES AWAY FROM THE FLYWHEEL.

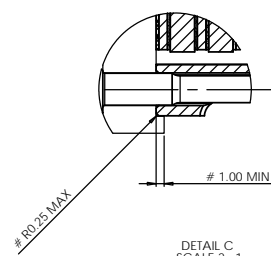
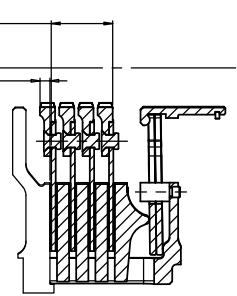


SECTION H-H

# FLYWHEEL DIMENSIONS

24.00 MAXIMUM NEW

4.25 MAXIMUM WORN



Issue No.	Alterations		Zone	Initials
	Date & No.	Particulars		
		SEE SHEET 1 FOR ISSUE INFORMATION.		

SCALE 1:1	SHEET 2 OF 3
DRAWN	Jeremy Govan
APPROVED	
DERIVED FROM	
TITLE	
Ø140mm (5.50") QUAD PLATE I-DRIVE CLUTCH ASSEMBLY	
DRG NO.	CP8804CD

# A1 INSTALLATION DRAWING

IF THIS DOCUMENT IS PRINTED IN HARDCOPY, IT IS FOR INFORMATION USE ONLY AND THEREFORE IS NOT SUBJECT TO UPDATING CONTROLS. ALWAYS REFER TO SOLIDWORKS VIEWER FOR LATEST ISSUE



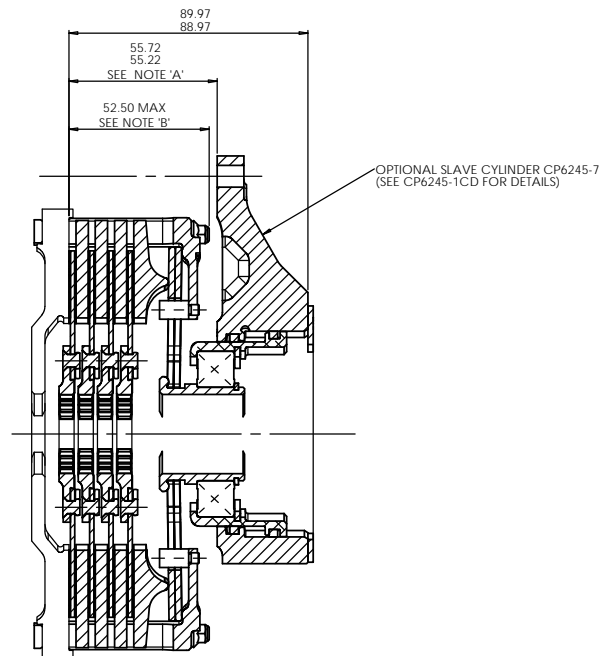
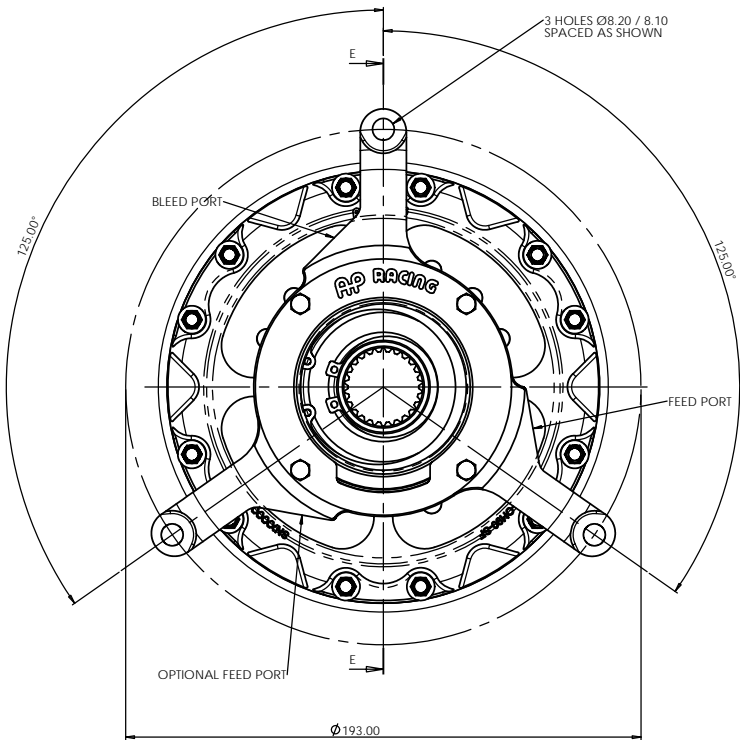
THIS DRAWING IS CONFIDENTIAL AND IS SUPPLIED ON THE EXPRESS CONDITION THAT IT SHALL NOT BE LOANED OR COPIED OR DISCLOSED TO ANY OTHER PERSON OR USED FOR ANY OTHER PURPOSE WITHOUT THE WRITTEN CONSENT OF AP RACING LTD.



AP Racing  
Wheler Road  
Coventry  
CV3 4LB

Tel: +44 (0) 24 7663 9595  
Fax: +44 (0) 24 7663 9559  
e-mail: [engineering@apracings.co.uk](mailto:engineering@apracings.co.uk)  
Web site: <http://www.apracings.com>

© AP Racing Ltd. 2013



SECTION E-E

**NOTE 'A'**  
THIS DIMENSION MUST BE MAINTAINED BY THE USE OF CORRECT LENGTH STUDS/SLEEVES TO ENSURE PROPER FUNCTIONING OF THE RELEASE MECHANISM.

**NOTE 'B'**  
IN THE CASE OF 'OVER LONG' MOUNTING STUD PROTRUSION THROUGH NUT SOME MACHINING OF STUD LENGTH MAY BE REQUIRED.

**PLEASE CHECK SLAVE CLEARANCE**

SLAVE CYLINDER SET-UP HEIGHT FROM NEW MUST MAKE ALLOWANCES FOR MAXIMUM CLUTCH WEAR-IN (1.50 mm) AND MAXIMUM RELEASE TRAVEL (4.00mm).

Issue No.	Alterations			Zone	Initials
	Date & No.	Particulars			
-	-	SEE SHEET 1 FOR ISSUE INFORMATION.	-	-	-

SCALE 1:1		SHEET 3 OF 3	
DRAWN	Jeremy Govan		
APPROVED			
DERIVED FROM			
TITLE			
Ø140mm (5.50") QUAD PLATE I-DRIVE CLUTCH ASSEMBLY			
DRG NO.	CP8804CD		