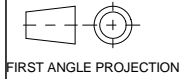


# A2 INSTALLATION DRAWING

If this document is printed in hardcopy, it is for information use only and therefore is not subject to updating controls. Always refer to viewer for latest issue.



THIS DRAWING IS CONFIDENTIAL AND IS SUPPLIED ON THE EXPRESS CONDITION THAT IT SHALL NOT BE LOANED OR COPIED OR DISCLOSED TO ANY OTHER PERSON OR USED FOR ANY OTHER PURPOSE WITHOUT THE WRITTEN CONSENT OF AP RACING LTD.



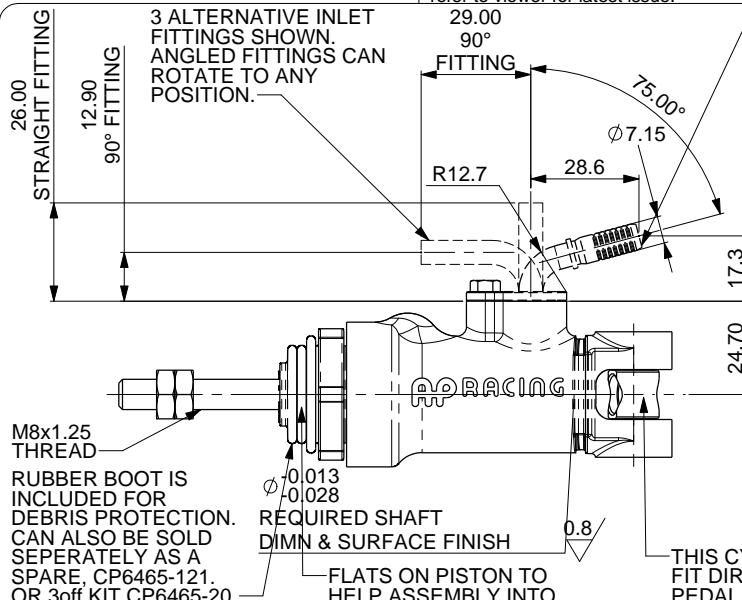
AP Racing  
Wheler Road  
Coventry  
CV3 4LB

Tel: +44 024 7663 9595  
Fax: +44 024 7663 9599  
e-mail: sales@apracing.co.uk

© AP Racing Ltd. 2016

Web site: http://www.apracing.com

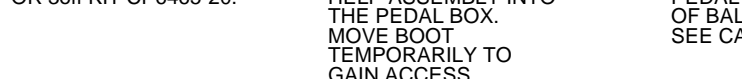
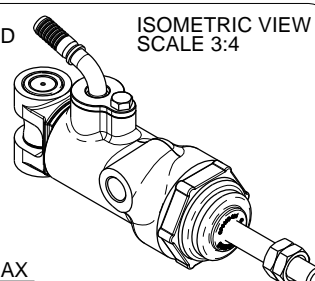
Issue No.	Date & No.	Alterations		Zone	Initials
		Particulars	#		
1	07/06/16 B6816	FIRST ISSUE			THS
2	21/06/16 B6816_12	WAS 1 ME21101 M8x1.25 LOCK NUT IN ALL VIEWS AND ASSEMBLIES. NOW 2.			THS
3	22/06/16 B6816_13	SHEET 2 BOOT INCLUDED IN REPAIR KIT. REF 18 AKS PLUG REMOVED FROM REPAIR KIT. REF 5 SLEEVE REMOVED FROM REPAIR KIT. REF 6			THS
4	06/07/16 B6816_16	SHEET 1 POTENTIOMETER KIT OPTION. NOTE AND DRAWING REMOVED. CP6467-254PRME WAS CP6465-254PRME		5B C8	THS
5	10/09/19 B5078	PISTON REFERENCE DIMENSIONS UPDATED TO 12.00 WAS 11.90		5B	SCY



INLET FITTINGS SHOWN --- ARE NOT SUPPLIED WITH THE CYLINDER. THESE FITTINGS ARE DESIGNED TO SUIT THE GOODRIDGE G-LINE RANGE OF FITTINGS AND HOSES. AP RACING RECOMMENDS THE 910 SERIES HOSES.  
ALTV. INLETS:- (AVAILABLE FROM AP RACING)  
CP6465-10 (75° BEND AS SHOWN)  
CP6465-11 (STRAIGHT)  
CP6465-12 (90° BEND)

EACH PART WILL BE LAZER ETCHED WITH THE SIZE, PART No. AND A SERIAL No. HERE

ISOMETRIC VIEW  
SCALE 3:4

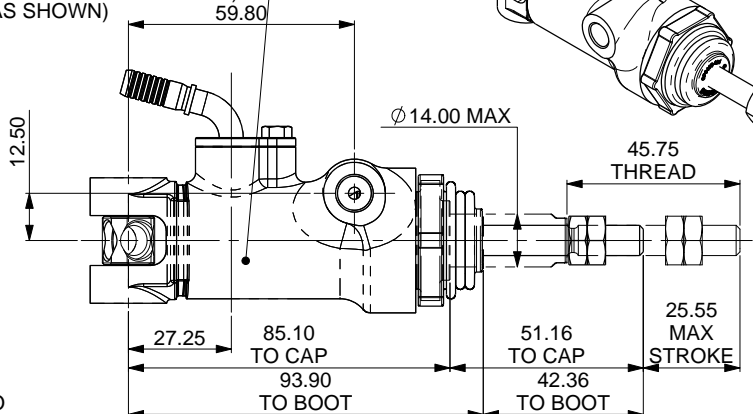


RUBBER BOOT IS INCLUDED FOR DEBRIS PROTECTION. CAN ALSO BE SOLD SEPARATELY AS A SPARE, CP6465-121. OR 3off KIT CP6465-20.

REQUIRED SHAFT DIM & SURFACE FINISH

FLATS ON PISTON TO HELP ASSEMBLY INTO THE PEDAL BOX. MOVE BOOT TEMPORARILY TO GAIN ACCESS.

THIS CYLINDER IS DESIGNED TO FIT DIRECT TO OUR RANGE OF PEDAL BOXES, AND OUR RANGE OF BALANCE BAR ASSEMBLIES. SEE CATALOGUE FOR DETAILS



## GENERAL DESCRIPTION

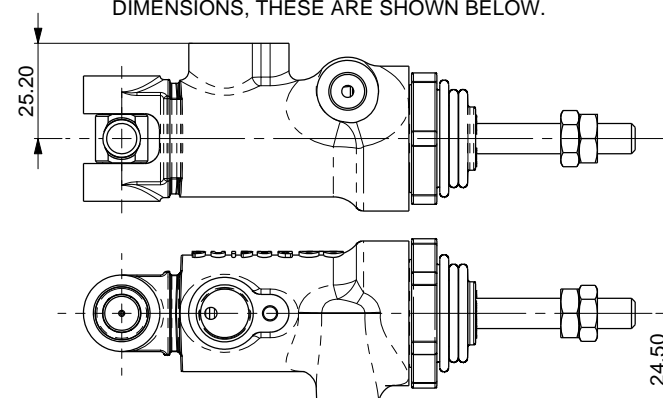
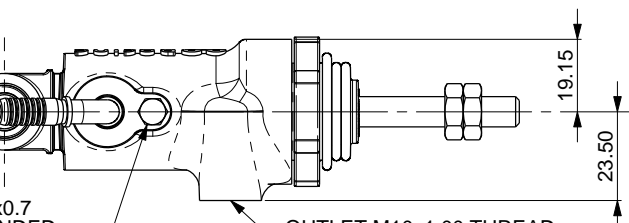
THIS PULL TYPE MASTER CYLINDER HAS BEEN DESIGNED TO BE MORE EFFICIENT THAN NORMAL MASTER CYLINDERS AND TO BE USED WITH ABS BRAKING SYSTEMS. THIS IS DUE TO THE COMPACT NATURE, THERE IS LESS CHANCE OF UNWANTED SIDE LOADING. THERE IS A CENTRE VALVE TO REDUCE NIBBLE OF THE MAIN SEAL. DESIGNED INTO THE BACK OF THE CYLINDER IS NEEDLE ROLLER BEARING CLEVIS. THIS HAS BEEN DESIGNED TO FIT INTO OUR HIGH EFFICIENCY AND LOW HYSTERESIS BALANCE BAR. THE SPECIAL INLET FITTING AND 90deg OUTLET ALLOWS THE CYLINDER TO SIT LOW BUT WITHOUT TRAPPING AIR. OUR SELECTION OF RECOMMEND OUTLETS ARE SHOWN ON SHEET 2.  
**THIS MASTER CYLINDER HAS THE OPTION TO BE SUPPLIED WITH AN ANTI-KNOCKBACK PLUG TO REDUCE THE EFFECT OF PAD KNOCKBACK. SEE SHEET 2 FOR MORE DETAILS.**  
APPROX. WEIGHTS RANGE FROM 240grams TO 280grams.

HEX HEAD BOLT M4x0.7 THREAD, RECOMMENDED TIGHTENING TORQUE 3.0 - 3.5Nm (2.2 - 2.5lbf), WE ALSO RECOMMEND THE USE OF LOCTITE 243 THREAD LOCKER.

OUTLET M10x1.00 THREAD, 8.00 MIN THREAD DEPTH, SEE FITTING OPTIONS.

## IMPORTANT NOTE

THE CP6467-254PRME MASTER CYLINDER HAS SOME DIFFERENCES WITH VARIOUS INSTALLATION DIMENSIONS, THESE ARE SHOWN BELOW.



PART NUMBER	CORRECTED BORE SIZES FOR CALCULATIONS	REFERENCE DIMENSIONS		
		BORE Ø (mm)	PISTON Ø (mm)	AREA (mm²)
CP6467-149PRME	14.9 (0.587")	19.05	12.00	173.80
CP6467-162PRME	16.2 (0.638")	19.05	10.00	206.48
CP6467-173PRME	17.3 (0.681")	22.23	14.00	234.01
CP6467-188PRME	18.8 (0.740")	22.23	12.00	276.73
CP6467-202PRME	20.2 (0.795")	22.23	9.25	320.75
CP6467-212PRME	21.2 (0.835")	25.40	14.00	352.77
CP6467-218PRME	21.8 (0.858")	25.40	13.00	373.98
CP6467-224PRME	22.4 (0.882")	25.40	12.00	395.49
CP6467-237PRME	23.7 (0.933")	25.40	9.25	439.51
CP6467-254PRME	25.4 (1.000")	26.99	9.25	504.93

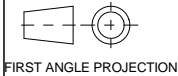
NOTE: OPTIMUM PULL TYPE CYLINDER DESIGN MEANS THAT TO USE STANDARDS SEAL SIZES AND BORE SIZES, THERE WOULD BE A SLIGHT VARIATION FROM STANDARD CYLINDERS. THE SIZES WERE ALSO ADJUSTED TO GIVE EQUAL STEPS BETWEEN THE DIFFERENT SIZES.

THE TABLE SHOWS THE MASTER CYLINDER PART NUMBERS AND A BORE SIZE THAT WOULD REFLECT A PUSH TYPE CYLINDER, THE CORRECTED BORE SIZE. THE PART NUMBER ALSO REFLECTS THE CYLINDER SIZE.

SCALE 1:1	SHEET 1 OF 2
DRAWN T HARGRAVE-SMITH	
APPROVED	
DERIVED FROM	
TITLE CP6467 MASTER CYLINDER CUSTOMER DRAWING	
DRG NO.	CP6467-1CD

# A2 INSTALLATION DRAWING

If this document is printed in hardcopy, it is for information use only and therefore is not subject to updating controls. Always refer to viewer for latest issue.



THIS DRAWING IS CONFIDENTIAL AND IS SUPPLIED ON THE EXPRESS CONDITION THAT IT SHALL NOT BE LOANED OR COPIED OR DISCLOSED TO ANY OTHER PERSON OR USED FOR ANY OTHER PURPOSE WITHOUT THE WRITTEN CONSENT OF AP RACING LTD.



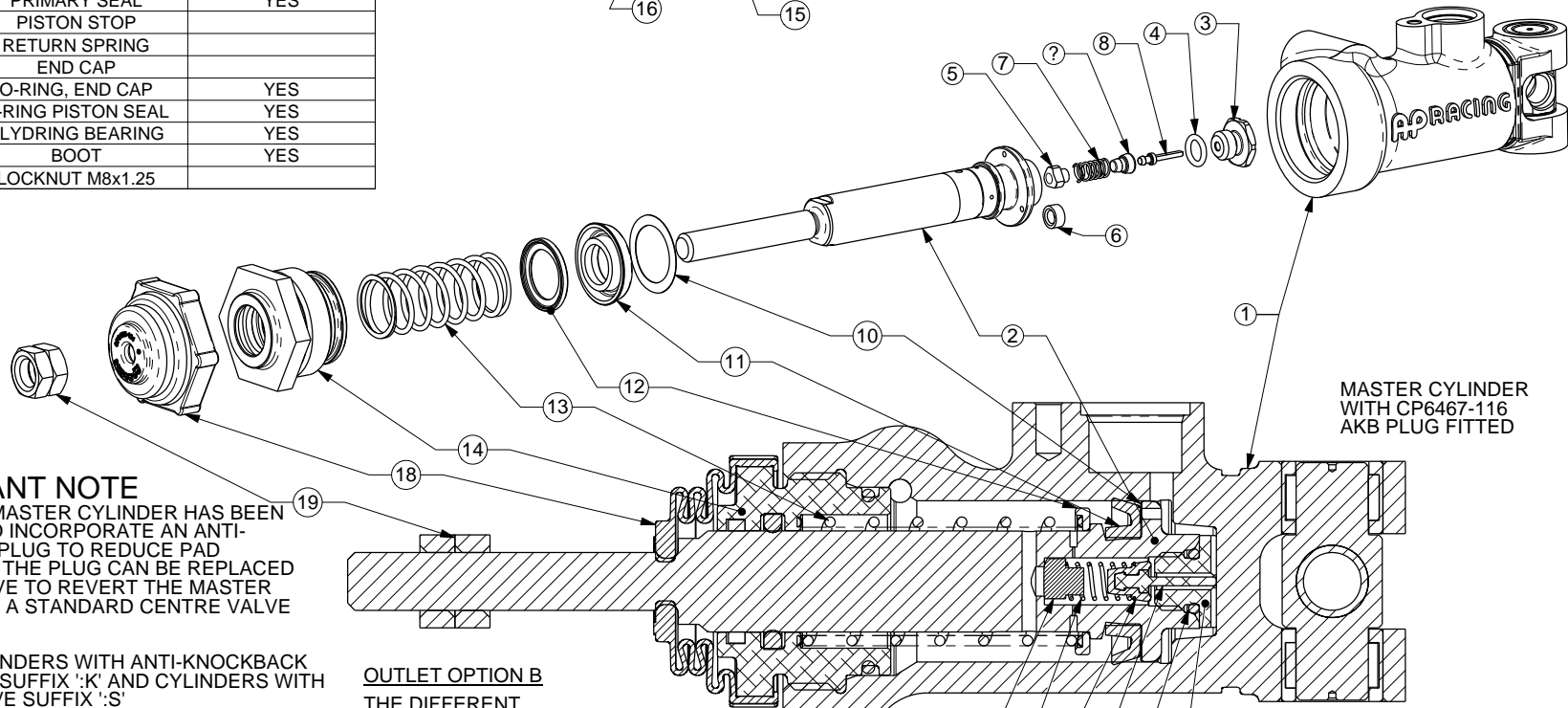
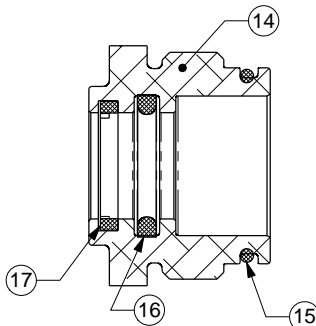
AP Racing  
Wheler Road  
Coventry  
CV3 4LB

Tel: +44 024 7663 9595  
Fax: +44 024 7663 9559  
e-mail: sales@ap racing.co.uk  
Web site: http://www.ap racing.com

© AP Racing Ltd. 2016

REF	DESCRIPTION	INCLUDED IN REPAIR KIT
1	BODY	
2	PISTON	
3	VALVE CAP	
4	O-RING, VALVE CAP	YES
5	AKB PLUG	
6	SLEEVE	
7	SPRING	
8	VALVE PISTON	
9	VALVE SEAL	YES
10	PISTON WASHER	YES
11	PRIMARY SEAL	YES
12	PISTON STOP	
13	RETURN SPRING	
14	END CAP	
15	O-RING, END CAP	YES
16	D-RING PISTON SEAL	YES
17	SLYDRING BEARING	YES
18	BOOT	YES
19	LOCKNUT M8x1.25	

PART NUMBER	CORRECTED BORE SIZES FOR CALCULATIONS	REFERENCE DIMENSIONS			REPAIR KITS
		BORE Ø (mm)	PISTON Ø (mm)	AREA (mm²)	
CP6467-149PRME	14.9 (0.587")	19.05	12.00	173.80	CP6467-149RK
CP6467-162PRME	16.2 (0.638")	19.05	10.00	206.48	CP6467-162RK
CP6467-173PRME	17.3 (0.681")	22.23	14.00	234.01	CP6467-173RK
CP6467-188PRME	18.8 (0.740")	22.23	12.00	276.73	CP6467-188RK
CP6467-202PRME	20.2 (0.795")	22.23	9.25	320.75	CP6467-202RK
CP6467-212PRME	21.2 (0.835")	25.40	14.00	352.77	CP6467-212RK
CP6467-218PRME	21.8 (0.858")	25.40	13.00	373.98	CP6467-218RK
CP6467-224PRME	22.4 (0.882")	25.40	12.00	395.49	CP6467-224RK
CP6467-237PRME	23.7 (0.933")	25.40	9.25	439.51	CP6467-237RK
CP6467-254PRME	25.4 (1.000")	26.99	9.25	504.93	CP6467-254RK



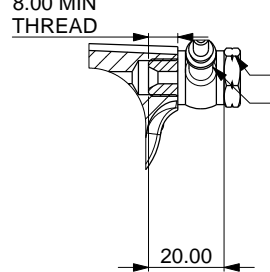
MASTER CYLINDER WITH CP6467-116 AKB PLUG FITTED

**IMPORTANT NOTE**  
THE CP6467 MASTER CYLINDER HAS BEEN DESIGNED TO INCORPORATE AN ANTI-KNOCKBACK PLUG TO REDUCE PAD KNOCKBACK. THE PLUG CAN BE REPLACED WITH A SLEEVE TO REVERT THE MASTER CYLINDER TO A STANDARD CENTRE VALVE ABS TYPE.

MASTER CYLINDERS WITH ANTI-KNOCKBACK PLUGS HAVE SUFFIX 'K' AND CYLINDERS WITH SLEEVES HAVE SUFFIX 'S'  
EXAMPLE: CP6467-202PRME:K  
CP6467-202PRME:S

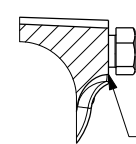
**OUTLET OPTION B**  
THE DIFFERENT TYPES REFER TO THE THREAD ON THIS TUBE NUT.

**OUTLET OPTION A**  
8.00 MIN THREAD



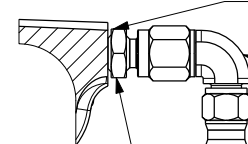
GOODRIDGE SINGLE BANJO BOLT TO YOUR PREFERENCE.

2 TYPES:  
CP6465-16 - 3/8"UNF  
CP6465-17 - M10x1.0



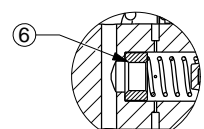
NO GASKET REQUIRED

**OUTLET OPTION C**



NO GASKET REQUIRED  
GOODRIDGE, RIGHT ANGLE FITTING TO YOUR PREFERENCE.

GOODRIDGE, MALE TO MALE ADAPTOR M10x1.00 TO 3/8"UNF Pt No. 305-03-31



MASTER CYLINDER WITH CP6467-117 SLEEVE FITTED

Issue No.	Alterations		Zone	Initials
	Date & No.	Particulars		
-	-	SEE SHEET 1 FOR ISSUE INFORMATION.	-	-

SCALE 1:1	SHEET 2 OF 2
DRAWN T HARGRAVE-SMITH	APPROVED
DERIVED FROM	
TITLE CP6467 MASTER CYLINDER CUSTOMER DRAWING	
DRG NO.	CP6467-1CD